

Monmouthshire
Key Stage 4 / Key Stage 5 Performance
December 2018

Purpose: To inform Scrutiny Members of pupil performance at Key Stage 4 and Key Stage 5

At Key Stage 4, a range of performance measures are used to evaluate and compare the full range of achievement within and across local authorities. These include the following broad measures and individual subjects.

- Level 2 threshold including English or Welsh first language and best of mathematics/numeracy (L2+)
- Level 2 threshold (L2)
- Level 1 threshold (L1)
- Capped Points 9 (CP9)
- A*-C in English or Welsh first language GCSE
- A*-C in mathematics/numeracy GCSE
- A*-C in science GCSE

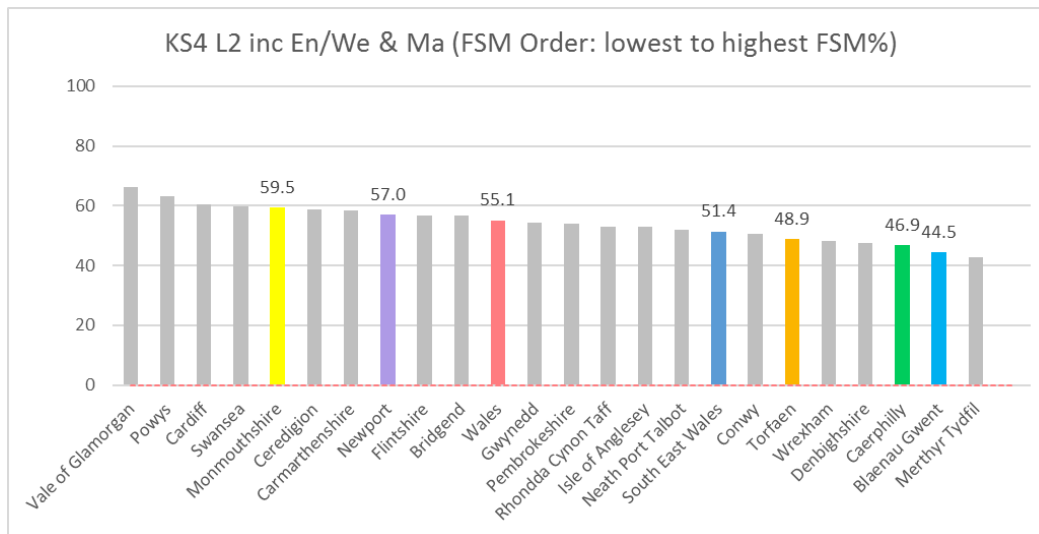
Update on changes in accountability frameworks at Key Stage 4

In agreement with LA Directors the EAS offered a series of workshops for elected members in each LA, in September 2018. These described changes to examination arrangements at key stage 4.

As with 2017-18 there are significant revisions to examinations that means they focus in part on different skill sets and knowledge than in previous years. The region continues to work with schools to track individual pupil performance over time. This will mean that school leaders and our local authorities are supported in gauging where schools are progressing well or where they may need additional support.

Communications from the examination awarding body and the regulator indicated that this variability was to be expected, and this is reflected in regional results. As in previous years we have been talking to post-16 providers to ensure that no learner is disadvantaged and that they are provided with appropriate pathways following results.

The proportion of pupils achieving the Level 2 threshold inclusive of English/Welsh first language and mathematics has declined by 7.5pp from 67.0% in 2017 to 59.5% in 2018. The Wales figure has improved by 0.5pp to 55.1%.



Performance against Targets

When comparing results against June predictions, all of the four secondary schools in the region reported performance below their June estimates, only Chepstow was within 5pp of this estimate.

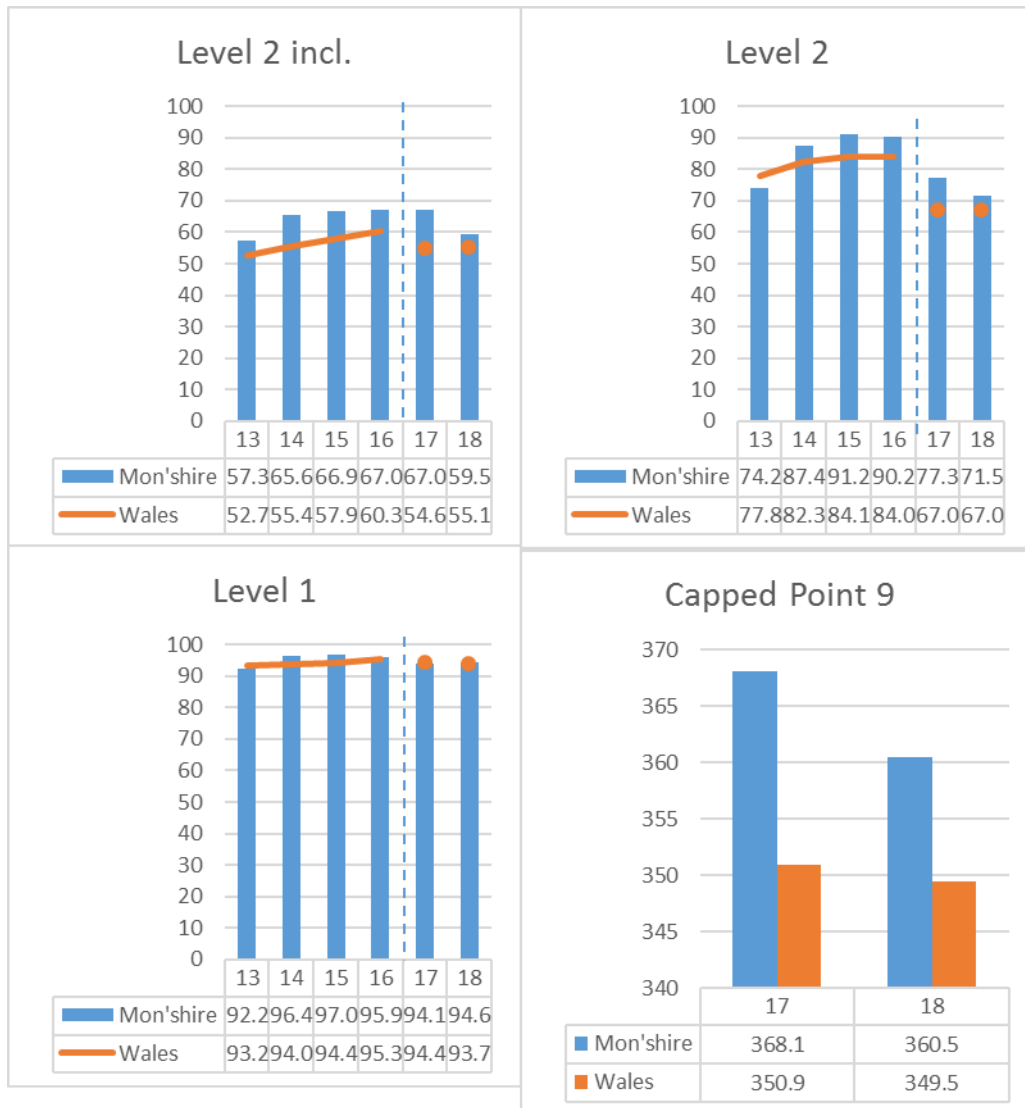
FSM L2 inclusive threshold

L2 inclusive threshold performance of FSM pupils in 2018 has declined by 10 pp to 17.9%. In comparison, the national FSM average improved by 0.8 pp from 28.6% to 29.4%. The FSM/non FSM gap has increased from 43.7 pp to 48.0 pp.

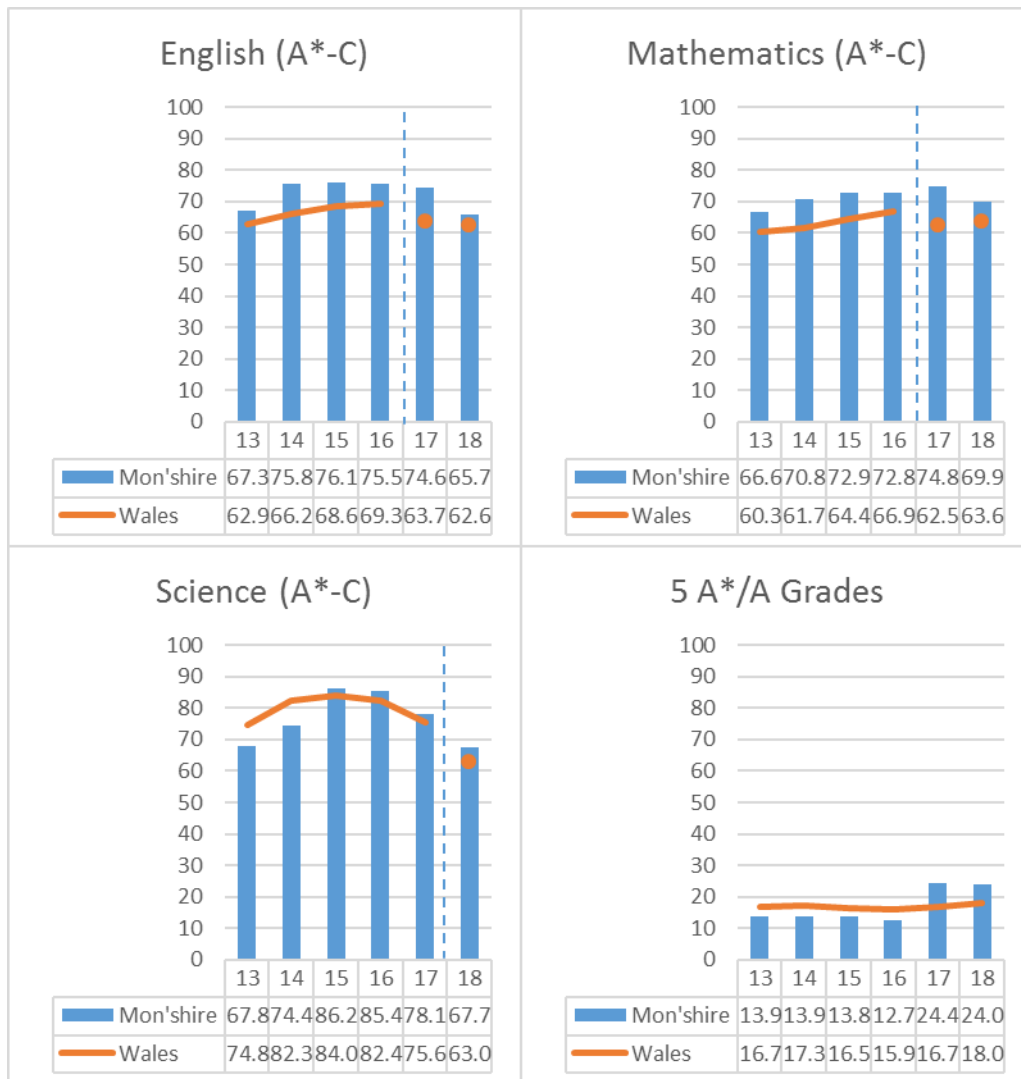
Only King Henry VIII reported improved FSM performance this year.

Note: Science figures prior to 2018 include BTECs, from 2018 onwards the figures will be for GCSE science only. These changes have had an impact on both L2 science outcomes and also the overall Level 2 Threshold.

All indicators are above the national average, despite a decline at L2 inc, L2 and Capped Point 9.

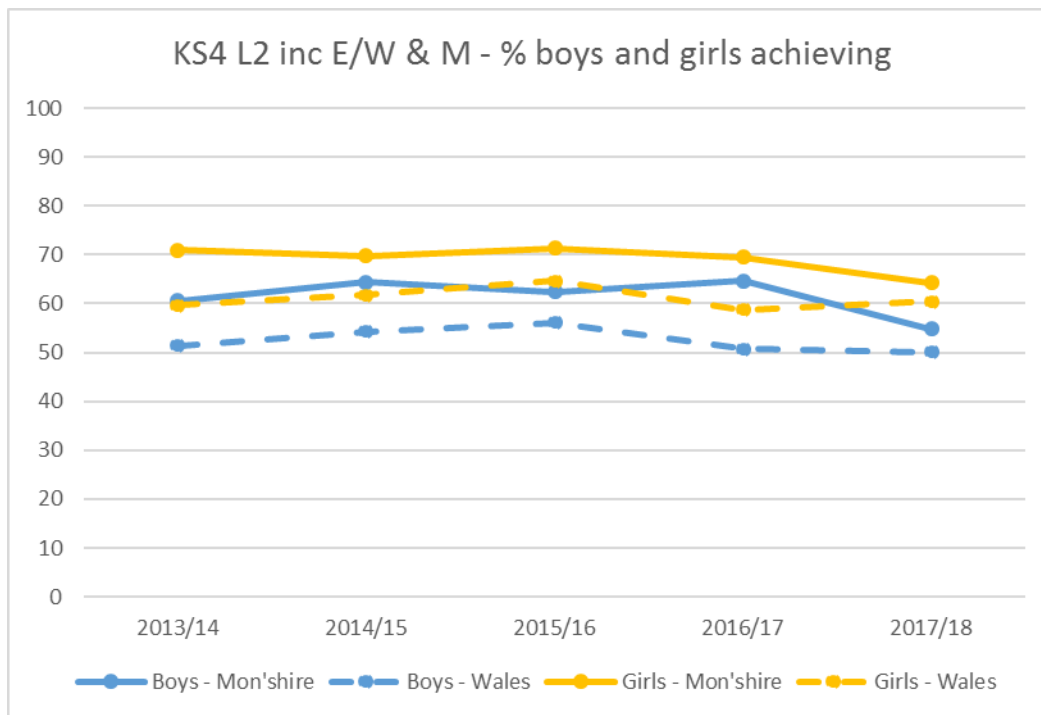


There were declines in all subjects and the 5A*/A indicator. All indicators remain above the national average.



Gender Differences

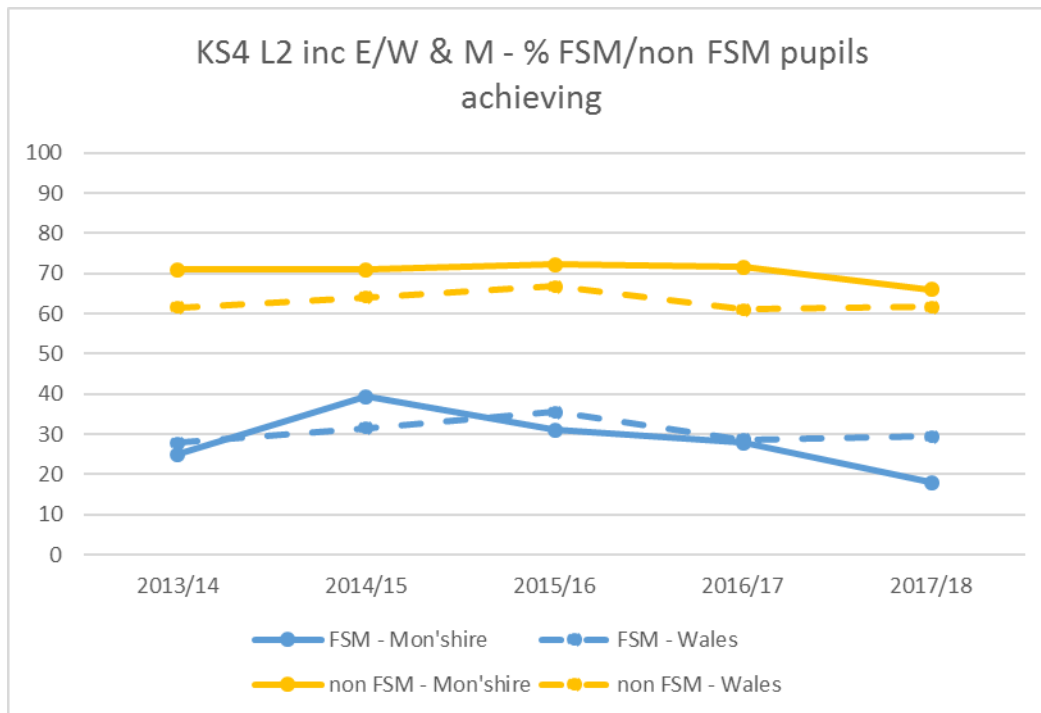
The gender gap widened in 2018 for the Level 2 threshold inclusive of English/Welsh first language and mathematics from a 4.9 points gap in 2017 to a 9.4 points gap in 2018. The gap is still narrower than across Wales. The gap has widened due to a larger decline in boys' performance compared to girls' performance.



KS4 L2 inc E/W & M (% achieving)	2013/14	2014/15	2015/16	2016/17	2017/18
Boys - Mon'shire	60.6	64.4	62.4	64.6	54.8
Boys - Wales	51.4	54.3	56.1	50.7	50.1
Girls - Mon'shire	71.0	69.7	71.3	69.5	64.2
Girls - Wales	59.7	61.8	64.7	58.8	60.5
Difference (boys% - girls%) - Mon'shire	-10.4	-5.3	-8.9	-4.9	-9.4
Difference (boys% - girls%) - Wales	-8.3	-7.5	-8.6	-8.1	-10.4

Performance of eFSM / non-eFSM Pupils

The FSM/non FSM gap widened in 2018 for the Level 2 threshold inclusive of English/Welsh first language and mathematics from a 43.7 points gap in 2017 to a 47.9 points gap, above the Wales average of 32.2 points, which remained stable. The gap has increased over the past few years, and the gap has widened this year due to the larger decrease in FSM pupil performance than non FSM pupil performance.



KS4 L2 inc E/W & M (% achieving)	2013/14	2014/15	2015/16	2016/17	2017/18
FSM - Mon'shire	25.0	39.4	31.0	27.9	17.9
FSM - Wales	27.8	31.6	35.6	28.6	29.5
non FSM - Mon'shire	71.0	71.0	72.2	71.6	65.8
non FSM - Wales	61.6	64.1	66.8	61.0	61.7
Difference (FSM% -non FSM%) - Mon'shire	-46.0	-31.6	-41.2	-43.7	-47.9
Difference (FSM% -non FSM%) - Wales	-33.8	-32.5	-31.2	-32.4	-32.2

LA Rankings

Monmouthshire's ranking declined for L2 inc performance, L1 and Capped Point 9.

	L2 inclusive	L2	L1	Capped Point 9
2018	5	6	11	7
2017	1	2	14	3

L2 inc Eng/Wel & Mat		Level 2 Threshold		Level 1 Threshold		Capped Points 9 Score	
Vale of Glamorgan	66.3	Ceredigion	75.3	Carmarthenshire	96.1	Vale of Glamorgan	377.1
Powys	63.1	Vale of Glamorgan	75.1	Vale of Glamorgan	95.8	Ceredigion	373.7
Cardiff	60.4	Powys	74.8	Gwynedd	95.7	Cardiff	366.0
Swansea	59.8	Carmarthenshire	72.3	Powys	95.5	Swansea	364.6
Monmouthshire	59.5	Cardiff	72.0	Swansea	95.5	Powys	363.6
Ceredigion	58.6	Monmouthshire	71.5	Isle of Anglesey	95.3	Carmarthenshire	363.1
Carmarthenshire	58.4	Swansea	70.4	Ceredigion	95.2	Monmouthshire	360.5
Newport	57.0	Bridgend	69.9	Rhondda Cynon Taff	94.7	Gwynedd	359.5
Flintshire	56.6	Gwynedd	69.4	Flintshire	94.7	Bridgend	357.2
Bridgend	56.6	Flintshire	69.2	Bridgend	94.6	Flintshire	352.2
Wales	55.1	Wales	67.0	Monmouthshire	94.6	Wales	349.5
Gwynedd	54.5	Isle of Anglesey	66.0	Cardiff	94.2	Isle of Anglesey	349.1
Pembrokeshire	53.9	Neath Port Talbot	65.5	Wales	93.7	Rhondda Cynon Taff	348.0
Rhondda Cynon Taff	53.1	Rhondda Cynon Taff	64.2	Blaenau Gwent	93.3	Conwy	342.5
Isle of Anglesey	53.0	Newport	64.1	Conwy	93.3	Neath Port Talbot	341.3
Neath Port Talbot	52.0	Conwy	64.1	Neath Port Talbot	92.9	Pembrokeshire	336.1
South East Wales	51.4	Pembrokeshire	62.4	Wrexham	92.5	Newport	336.0
Conwy	50.7	Wrexham	62.2	South East Wales	92.2	South East Wales	333.2
Torfaen	48.9	South East Wales	61.8	Caerphilly	92.1	Wrexham	332.7
Wrexham	48.2	Denbighshire	60.1	Pembrokeshire	91.8	Torfaen	327.7
Denbighshire	47.5	Caerphilly	59.7	Newport	91.4	Caerphilly	327.2
Caerphilly	46.9	Merthyr Tydfil	58.1	Torfaen	91.1	Denbighshire	323.2
Blaenau Gwent	44.5	Torfaen	57.9	Merthyr Tydfil	90.9	Blaenau Gwent	318.7
Merthyr Tydfil	42.7	Blaenau Gwent	56.7	Denbighshire	87.0	Merthyr Tydfil	317.9

Individual Schools

The table below presents the individual schools' data in order of Free School Meal eligibility (lowest to highest). The estimated benchmark position is also highlighted.

Quarter 1	Quarter 2	Quarter 3	Quarter 4
-----------	-----------	-----------	-----------

School	% L2 E,W+M			% L2			% L1			Capped	
	2016	2017	2018	2016	2017	2018	2016	2017	2018	2017	2018
Monmouth	69.7	74.0	69.4	96.7	79.9	75.9	99.6	97.2	98.4	378.5	373.1
Caldicot	69.7	66.2	47.7	88.7	81.6	68.3	97.7	93.0	97.5	370.1	356.2
Chepstow	62.9	69.8	66.4	88.8	73.6	74.3	95.8	97.7	97.1	369.3	373.7
King Henry VIII	71.2	62.3	63.7	95.3	80.1	79.6	98.8	97.9	98.1	383.4	393.1
Monmouthshire	67.0	67.0	59.5	90.2	77.3	71.5	95.9	94.1	94.6	368.1	360.5
Wales	60.3	54.6	55.1	84.0	67.0	66.9	95.3	94.4	93.6	350.9	350.0

School	English (A*-C)			Maths (A*-C)			% L2 Science		
	2016	2017	2018	2016	2017	2018	2016	2017	2018
Monmouth	78.7	80.7	74.7	75.8	79.9	77.6	84.0	83.9	73.5
Caldicot	79.6	73.1	56.8	73.3	70.6	59.8	84.2	76.6	61.3
Chepstow	71.3	82.2	74.3	72.7	76.7	73.6	91.6	73.6	73.6
King Henry VIII	78.2	68.5	67.5	77.1	79.5	80.3	94.1	84.2	74.5
Monmouthshire	75.5	74.6	65.7	72.8	74.8	69.9	85.4	78.1	67.7
Wales	69.3	63.7	62.6	66.9	62.5	63.5	82.4	75.6	63.0

Free School Meal Benchmark Summary

When FSM benchmark data is used to compare the performance of similar schools, the number of Monmouthshire schools above the median has increased in L2 inc, Capped Point 9, English, mathematics and science since 2016. In this time the number of schools in the bottom quarter has increased for L2, Capped Point 9, mathematics and science.



Individual school benchmark performance is presented in Appendix A.

Welsh Government Modelled Expectation

In 2018, none of the schools in Monmouthshire schools achieved L2 + results above their WG modelled estimates.

School	2018 L2+ results	WG modelled estimate	Difference
Caldicot	47.7	67.2	-19.5
Chepstow	66.4	73.4	-7.0
King Henry VIII	63.7	69.5	-5.8
Monmouth	69.4	71.5	-2.1

LA – Key Stage 5 (Monmouthshire LA Schools only)

Performance Data

Note: Welsh Government are considering new performance measures for future years, which have yet to be decided

	Percentage of students achieving the level 3 threshold (a volume of qualifications at Level 3 equivalent to the volume of 2 A levels at grades A*-E)			
	2017	Results Day 2018	1st Prov SSSPs 2018	Difference
Monmouthshire	97.3	98.3	98.7	0.5
South East Wales	96.4	96.3	96.2	-0.2
Wales	97.1		97.6	0.5

Cohort size 2017 = 381, Cohort size 2018 = 416

- When vocational qualifications are taken into account and the Welsh Government's main indicator of post-16 performance, the Level 3 threshold, is considered, performance increased from 97.3% to 98.7%.
- This 0.5pp increase is in contrast to a slight decrease across the EAS region, but matches the 0.5pp increase across Wales.

Appendix A – Key Stage 4, School Benchmark Quarter Performance

Subject, AOL or Key Indicator	School Name	2015/16		2016/17		2017/18	
		% Pupils Achieving	Quarter	% Pupils Achieving	Quarter	% Pupils Achieving	Quarter
Level 2 threshold including English/Welsh and Maths	Caldicot School	69.7	2	66.2	3	47.7	4
	Chepstow Comprehensive School	62.9	4	69.8	1	66.4	1
	King Henry VIII Comprehensive	71.2	1	62.3	2	63.7	2
	Monmouth Comprehensive School	69.7	3	74.0	1	69.4	2
Level 2 threshold	Caldicot School	88.7	3	81.6	2	68.3	4
	Chepstow Comprehensive School	88.8	3	73.6	3	74.3	3
	King Henry VIII Comprehensive	95.3	2	80.1	1	79.6	1
	Monmouth Comprehensive School	96.7	1	79.9	2	75.9	4
Level 1 threshold	Caldicot School	97.7	4	93.0	4	97.5	4
	Chepstow Comprehensive School	95.8	4	97.7	4	97.1	3
	King Henry VIII Comprehensive	98.8	3	97.9	3	98.1	3
	Monmouth Comprehensive School	99.6	3	97.2	4	98.4	3
Capped Points (Capped Points 9 from 2016/17)	Caldicot School	348.2	4	370.1	4	356.2	4
	Chepstow Comprehensive School	352.3	4	369.3	3	373.7	2
	King Henry VIII Comprehensive	364.4	2	383.4	2	393.1	1
	Monmouth Comprehensive School	372.6	2	378.5	3	373.1	4
English	Caldicot School	79.6	2	73.1	3	56.8	4
	Chepstow Comprehensive School	71.3	4	82.2	1	74.3	2
	King Henry VIII Comprehensive	78.2	2	68.5	3	67.5	2
	Monmouth Comprehensive School	78.7	3	80.7	2	74.7	2
Mathematics (Combined Mathematics from 2016/17)	Caldicot School	73.3	3	70.6	4	59.8	4
	Chepstow Comprehensive School	72.7	3	76.7	1	73.6	1
	King Henry VIII Comprehensive	77.1	2	79.5	1	80.3	1
	Monmouth Comprehensive School	75.8	3	79.9	1	77.6	2
Science	Caldicot School	84.2	3	76.6	4	61.3	4
	Chepstow Comprehensive School	91.6	3	73.6	3	73.6	2
	King Henry VIII Comprehensive	94.1	2	84.2	2	74.5	2
	Monmouth Comprehensive School	84.0	4	83.9	3	73.5	4